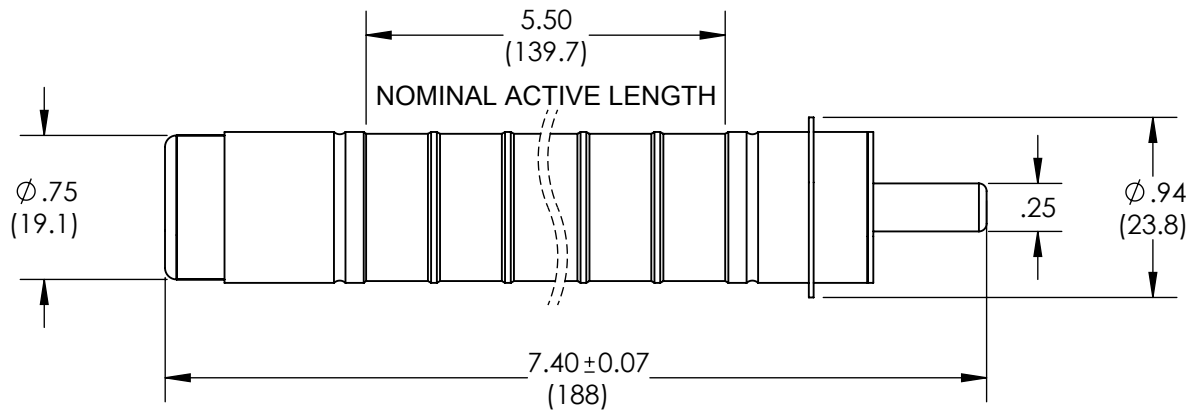
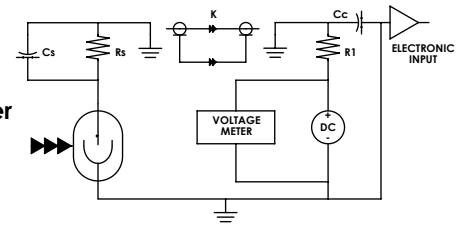


Fg: GM Counter test circuit


**NOTES:
- DWG NOT TO SCALE INCH (mm)
- DIMENSIONS ARE NOMINAL

ELECTRICAL CHARACTERISTICS

RECOMMENDED OPERATING VOLTAGE (volts)	900
OPERATING VOLTAGE RANGE (volts)	800 - 1000
MAXIMUM DEAD TIME (μ s)	150
MAXIMUM PLATEAU SLOPE (%/100 volts)	8
MINIMUM ANODE RESISTOR ($M\Omega$)	1
RECOMMENDED ANODE RESISTOR ($M\Omega$)	2.7
GAMMA SENSITIVITY Cs^{137} (cps/mR/hr)	80
MAX. BACKGROUND SHIELDED 50mmPb+3mmAl (cpm)	50
TUBE CAPACITANCE (pF)	3

MECHANICAL CHARACTERISTICS

NOMINAL ACTIVE LENGTH (inch/mm)	5.5 / 139.7
WINDOW THICKNESS (mg/cm^2)	-
ACTIVE DIAMETER (inch/mm)	.73 / 18.5
CATHODE MATERIAL	446 ST. STL.
CATHODE WALL THICKNESS (inch/mm)	40 - 60
OPERATING TEMPERATURE RANGE (°C)	-40 to 75
FILL GAS	Ne + HALOGEN
TYPE OF CONNECTOR	SINGLE PIN
APPROX. WEIGHT (grams)	35
MAXIMUM ALTITUDE (ft)	TBD

Rev. 0