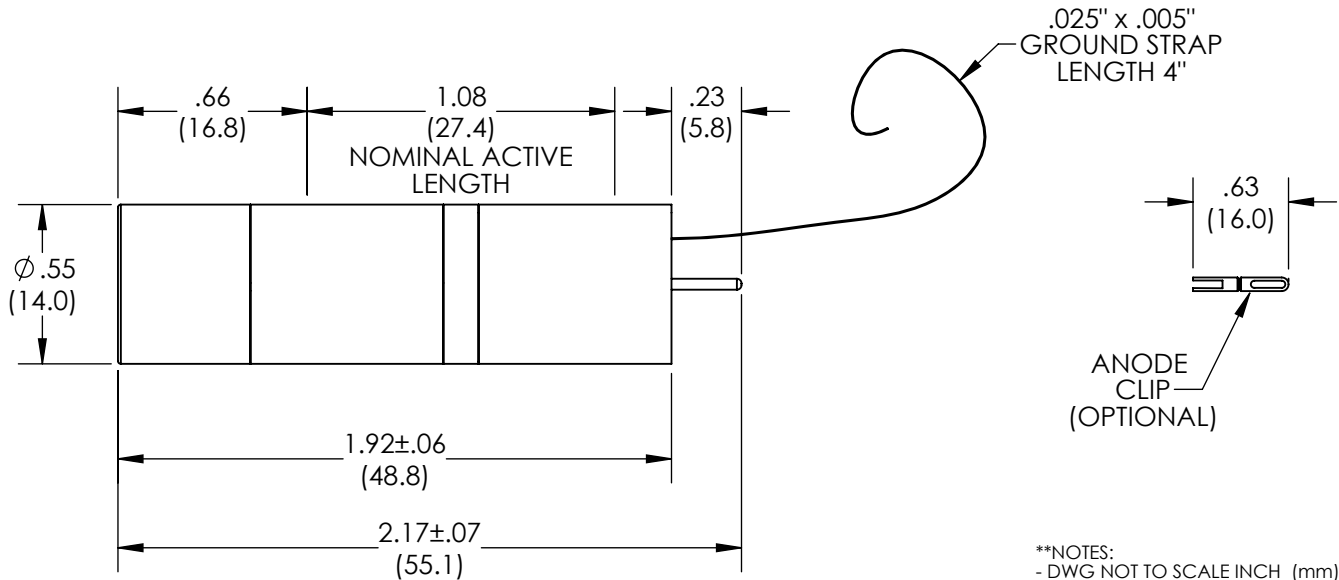
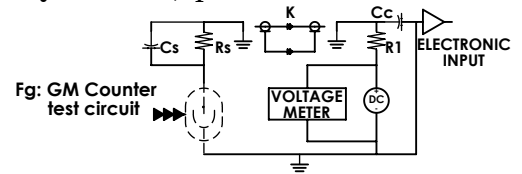


Energy Compensated Geiger-Mueller Tube
 Halogen Quenched, γ Radiation Tube.

 **NOTES:
 - DWG NOT TO SCALE INCH (mm)
 - DIMENSIONS ARE NOMINAL

ELECTRICAL CHARACTERISTICS

MAXIMUM STARTING VOLTAGE	380
RECOMMENED OPERATING VOLTAGE (volts)	575
OPERATING VOLTAGE RANGE (volts)	500 - 650
MAXIMUM DEAD TIME (μ s)	45
MAXIMUM PLATEAU SLOPE (%/100 volts)	8
MINIMUM ANODE RESISTOR (M Ω)	2.2
RECOMMENED ANODE RESISTOR (M Ω)	4.7
GAMMA SENSITIVITY Cs ¹³⁷ (cps/mR/hr)	8
MAX. BACKGROUND SHIELDED 50mmPb+3mmAl (cpm)	12
TUBE CAPACITANCE (pF)	1

MECHANICAL CHARACTERISTICS

NOMINAL ACTIVE LENGTH (inch/mm)	1.08 / 27.4
WINDOW THICKNESS (mg/cm ²)	N/A
ACTIVE DIAMETER (inch/mm)	.31 / 7.9
CATHODE MATERIAL	Cr - Fe
CATHODE WALL THICKNESS (inch/mm)	.002 / .05
OPERATING TEMPERATURE RANGE (°C)	-40 TO 70 ° C
FILL GAS	Ne/Ar + Halogen
TYPE OF CONNECTOR	Anode Pin
APPROX. WEIGHT (grams)	20
MAXIMUM ALTITUDE (ft)	N/A

Rev. 1