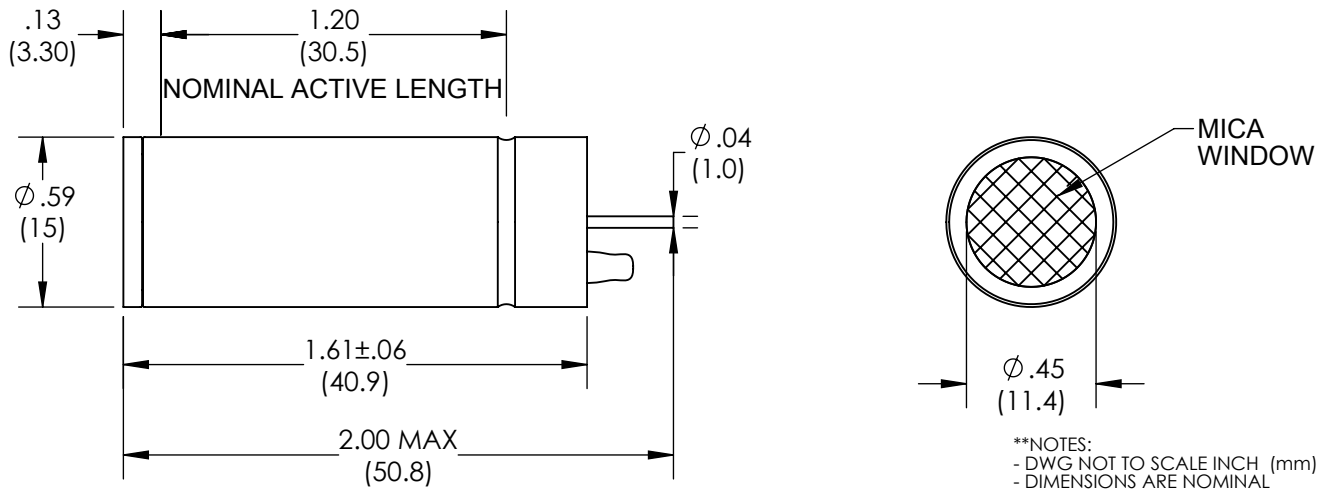
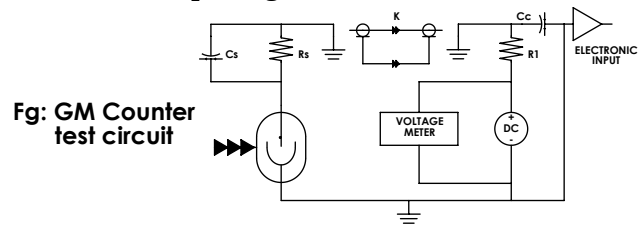


Mica Window Halogen-Quenched
 α, β, γ Geiger-Mueller Tube


ELECTRICAL CHARACTERISTICS

MAXIMUM STARTING VOLTAGE	340
RECOMMENDED OPERATING VOLTAGE (volts)	500
OPERATING VOLTAGE RANGE (volts)	400 - 600
MAXIMUM DEAD TIME (μ s)	90
MAXIMUM PLATEAU SLOPE (%/100 volts)	4
MINIMUM ANODE RESISTOR ($M\Omega$)	10
RECOMMENDED ANODE RESISTOR ($M\Omega$)	10
GAMMA SENSITIVITY Cs^{137} (cps/mR/hr)	23
MAX. BACKGROUND SHIELDED 50mmPb+3mmAl (cpm)	10
TUBE CAPACITANCE (pF)	3

MECHANICAL CHARACTERISTICS

NOMINAL ACTIVE LENGTH (inch/mm)	1.20 / 30.5
WINDOW THICKNESS (mg/cm^2)	1.5 - 2.0 , Mica
WINDOW DIAMETER (inch/mm)	.45 / 11.4
ACTIVE DIAMETER (inch/mm)	.57 / 14.5
CATHODE MATERIAL	Cr - Fe
CATHODE WALL THICKNESS (inch/mm)	.012 / .30
OPERATING TEMPERATURE RANGE (°C)	-20 to 55 ° C
FILL GAS	Ne/Ar + Halogen
TYPE OF CONNECTOR	Anode Pin
APPROX. WEIGHT (grams)	6
MAXIMUM ALTITUDE (ft)	10000

Rev. 0