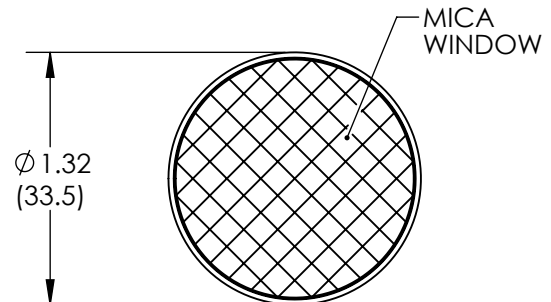
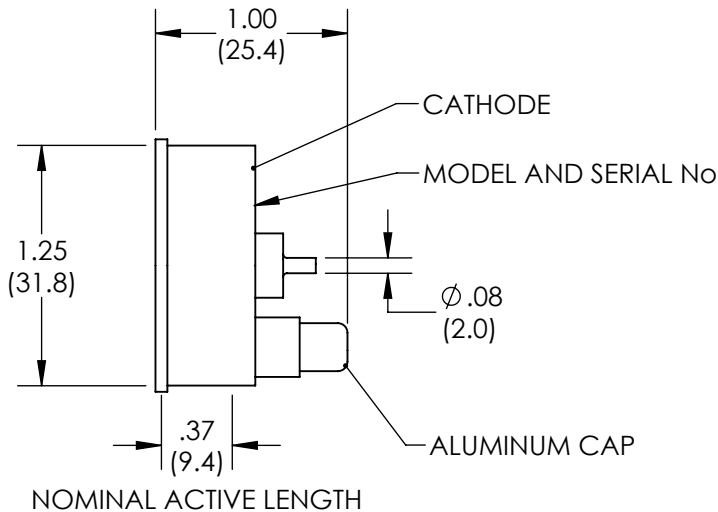
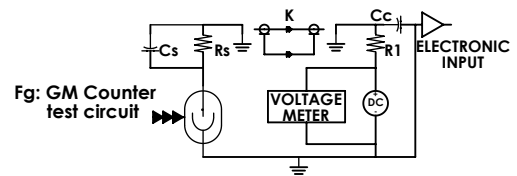


Mica Window Halogen-Quenched
 α, β, γ Geiger-Mueller Tube



**NOTES:
- DWG NOT TO SCALE INCH (mm)
- DIMENSIONS ARE NOMINAL

ELECTRICAL CHARACTERISTICS

MAXIMUM STARTING VOLTAGE	450
RECOMMENED OPERATING VOLTAGE (volts)	500
OPERATING VOLTAGE RANGE (volts)	450 - 600
MAXIMUM DEAD TIME (μ s)	40
MAXIMUM PLATEAU SLOPE (%/100 volts)	6
MINIMUM ANODE RESISTOR (M Ω)	3.3
RECOMMENED ANODE RESISTOR (M Ω)	4.7
GAMMA SENSITIVITY Cs ¹³⁷ (cps/mR/hr)	25
MAX. BACKGROUND SHIELDED 50mmPb+3mmAl (cpm)	8
TUBE CAPACITANCE (pF)	5

MECHANICAL CHARACTERISTICS

NOMINAL ACTIVE LENGTH (inch/mm)	.37 / 9.4
WINDOW THICKNESS (mg/cm ²)	1.6 - 2.0 , Mica
ACTIVE DIAMETER (inch/mm)	1.12 / 28.4
CATHODE MATERIAL	Cr - Fe
CATHODE WALL THICKNESS (inch/mm)	.065 / 1.65
OPERATING TEMPERATURE RANGE (°C)	-40 to 75 ° C
FILL GAS	Ne/Ar + Halogen
TYPE OF CONNECTOR	Post
APPROX. WEIGHT (grams)	33
MAXIMUM ALTITUDE (ft)	5000

Rev. 0