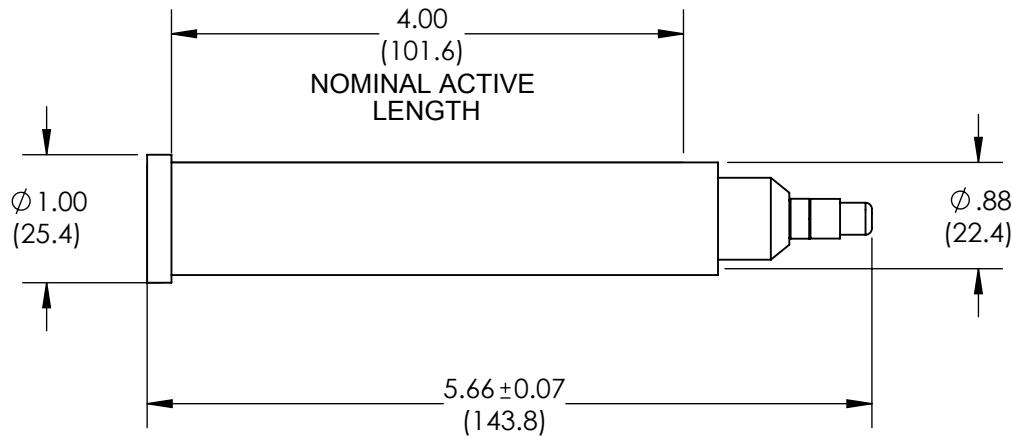
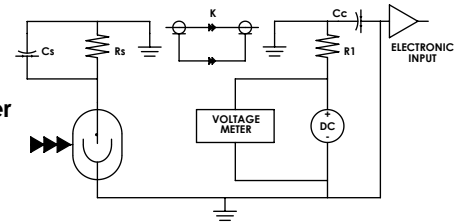


**Fg: GM Counter test circuit**



**\*\*NOTES:**  
- DWG NOT TO SCALE INCH (mm)  
- DIMENSIONS ARE NOMINAL

## ELECTRICAL CHARACTERISTICS

RECOMMENDED OPERATING VOLTAGE (volts)	750
OPERATING VOLTAGE RANGE (volts)	650 - 900
MAXIMUM DEAD TIME ( $\mu$ s)	100
MAXIMUM PLATEAU SLOPE (%/100 volts)	5
MINIMUM ANODE RESISTOR ( $M\Omega$ )	1
RECOMMENDED ANODE RESISTOR ( $M\Omega$ )	3.3
GAMMA SENSITIVITY $Cs^{137}$ (cps/mR/hr)	45
MAX. BACKGROUND SHIELDED 50mmPb+3mmAl (cpm)	25
TUBE CAPACITANCE (pF)	8

## MECHANICAL CHARACTERISTICS

NOMINAL ACTIVE LENGTH (inch/mm)	4.00 / 101.6
WINDOW THICKNESS ( $mg/cm^2$ )	1.8 - 2.2, MICA
ACTIVE DIAMETER (inch/mm)	.78 / 20.0
CATHODE MATERIAL	28% Cr, 72%Fe
CATHODE WALL THICKNESS (inch/mm)	-
OPERATING TEMPERATURE RANGE ( °C)	-20 to 50
FILL GAS	Ne + HALOGEN
TYPE OF CONNECTOR	PIN
APPROX. WEIGHT (grams)	-
MAXIMUM ALTITUDE (ft)	8000

Rev. 0